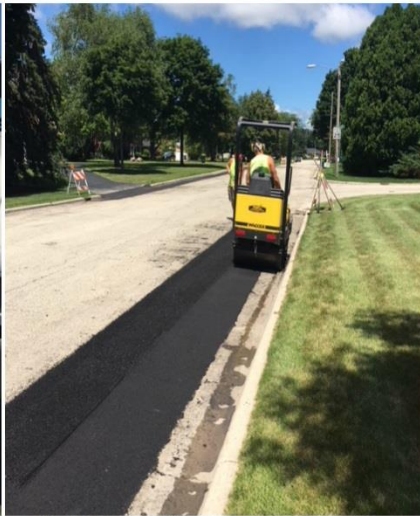


# 2017 Street Department Annual Report



**CITY OF PORT WASHINGTON  
STREET DEPARTMENT OPERATIONS  
2017 YEAR END REPORT**

**EQUIPMENT**

- Equipment Purchased
  - Grapple Bucket for Skid Loader
  
- Excess Equipment Sold
  - Bishman 931-A Tire Changer
  - Hydraulic Auger
  - 1985 Clipper Pavement Saw
  - Econo Auto Crane
  - Milwaukee Twin Life Hydraulic Post Jack
  - Monroe Tailgate Brine Tank

**NEW HIRES**

- Kahlin Taylor 5/15/2017

**ASPHALT**

- Removed and Replaced 498 Tons of Asphalt on the following streets
  - Jefferson
  - Hales Trail
  - Milwaukee
  - Noridge Trail
  - Spinnaker
  - Park St
  - Pebble House Parking lot
  - Antoine
  - Parkway Ct.
  - Parknoll



- Stanford
- Beutel
- Bley and 2<sup>nd</sup> Ave
- Orchard
- Benjamin
- Martin Drive
- Industrial Park
- Garfield

## **CRACK FILLING**

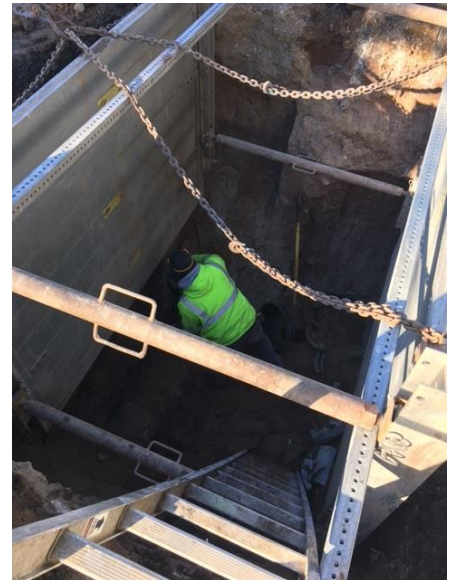
- In 2017 we continued to do crack filling in house
  - Half of Misty Ridge
  - New Port Vista
  - Sunrise
  - E Walters
  - Oak ct
  - Elm ct
  - Willow Ct
  - E Prospect
  - W Van Buren St
  - N Holden from Orchard to Webster
  - W Jackson Holden To Webster
  - 1000 Block of Stanford



## **STORM SEWERS**

- Repaired catch basin on 2<sup>nd</sup> Ave and Summit S.W. Corner
- 419 Norport
  - Catch basin Replacement
  - 10 ft of curb and gutter

- Cleveland and Lakeview S.W. Corner
  - Catch basin replacement
  - 6 ft of curb and gutter
  
- Monroe and Benjamin
  - Catch Basin replacement
  - 4 ft curb and gutter
  
- Jackson and Wisconsin
  - Catch basin replacement
  - 6X4 section of Jackson St replaced (concrete)
  
- 204 Jackson
  - Catch basin replacement
  - 8 ft of curb and gutter
  
- 122 S Webster
  - Catch basin replacement
  - 11 feet of curb and gutter
  
- 519 Orchard
  - Catch basin replacement
  - 11 curb and gutter
  
- 518 Orchard
  - Catch basin replacement
  - 11 curb and gutter
  
- 502 Foster
  - Catch basin replacement
  
- 900 Westport
  - 2 catch basin repairs on corner of Westport and Sumac



- 430 Walters
  - Repaired catch basin
  
- 749 Montgomery
  - Abandoned 2 storm sewers
  - Repaired Catch basin
  
- 730 Walters
  - Replaced top 4 ft of storm manhole
  
- Maritime Drive
  - Adjusted 2 storm manholes
    - 1 on Maritime
    - 1 on Mineral Springs by Construction forms
  
- 205 W Jackson (On Milwaukee)
  - Installed new catch basin
  - Ran drain tile behind sidewalk
  - Installed 220 feet of 8 inch PVC storm main down to Milwaukee St to existing storm sewer manhole.
  - Replaced 30 ft of sidewalk
  
- 1001 Westport
  - Repaired catch Basin
  
- 249 E Norport
  - Catch basin replacement
  - 4ft of curb and gutter

## **SANITARY SEWERS**

- Cleaned 1/3 of City Sanitary sewer collection system
- 1609 Parknoll Ln
  - o Replaced top 4 feet of sanitary manhole including casting ring and cones
- Maritime and Mineral Springs
  - o Replaced Castings and adjusting rings
- Misty Ridge
  - o Reset casting by retention pond



## **WATER DEPARTMENT**

- 1234 Lincoln
  - o 10 feet of curb and gutter
- 414 Harrison on Bill Goat Hill
  - o 10 feet of curb and gutter
- 400 North lake St
  - o Tuck-pointed wishing pond and wet well entrance
- 127 S Garfield
  - o Replaced 24 feet of sidewalk in front of resident
- Bywater Rd
  - o Replaced 10 feet of curb and gutter by hydrant that was hit

## **CONCRETE**

- 206 Garfield (Tree root damage)
  - o Replaced 20 feet of sidewalk
  - o 30 feet of curb and gutter
  - o Replaced carriage walk
  - o Replaced Driveway approach
- 403 Foster St (senior center)
  - o Buried downspouts for building with 6 inch PVC into catch basin

- Replaced concrete in front and side of center roughly 60 yards of concrete
- Replaced 40 feet of curb and gutter and added wheel chair ramps
- 2013 Willow Pond Way
  - Replaced 15 feet of sidewalk from tree roots lifting existing sidewalk
- Westport and Portview
  - Replaced 10 feet of sidewalk from tree roots lifting existing sidewalk
- Bridge by Fishermen's Park
  - 8x4 slab of concrete replaced
  - 14 yards of concrete to plug hole
  - 22 yards of flow able fill to fill existing void under walkway
- Jackson and Milwaukee
  - 20x32 patch in concrete road
- Gateway Project
  - Poured 250 feet of curb and gutter to extend parking lot
  - Poured 250 feet of sidewalk
  - Installed catch basin and drain pipe into pond
  - Adjusted man hold in parking lot to meet new grade for parking lot extension.



## SALT USAGE

- 2016
  - o 1,309 Tons (1,000 budgeted)
- 2017
  - o 880 Tons (1,100 budgeted)



## MISCELLANEOUS

- Repaired section of parking lot by grinding and repaving asphalt for the police and fire station
- Ditched the north side of Schmitz Drive for proper drainage
- 1 Week of fixing pavers on Franklin St
- Investigated the north slip tie back system
- Took over maintenance of Union Cemetery
- Fabricated a screener for the reuse of stump grindings for tree planting and asphalt millings for gravel
- Installed an underbody flush system in the Street Department Garage for Equipment washing
- Installed a new retaining wall on the reconstructed alley off Van Buren between Webster and Montgomery St
- Installed a new retaining wall off of Portview by 2<sup>nd</sup> Ave
- Designed and Built the lighthouse donation box for the gateway project
- Built and installed the rod holders for the gateway project



- Installed garbage and recycling receptacles for the gateway project
- Added Rip Rap to the gateway project
- Eliminated the invasive species along the gateway project

## **SIGNS AND MARKINGS**

- Painted 100% of center lines, parking stalls, and crosswalks

### **Street Name Signs**

1-Foxglove St	1-Indigo Dr	2-Harrison St
1-Jackson St	4-Dodge St	3-Webster St
1-Greystone Dr	1-Holden St	1-Pierre Ln
4-Walters St	1-Benjamin St	3-Montgomery St
1-Grand Ave	1-Webster St	1-Foster St
1-Maritime Dr		

### **Street Signs**

1500-Yard stickers  
 18-Stop  
 4-No parking anytime  
 1-2 hour parking  
 2-2 hour parking with restrictions  
 13-Pedestrian community walking signs  
 10-In street pedestrian crossing  
 1-Ladies Night Out banner  
 6-Detour  
 1-Jct  
 1-Hwy 33  
 1-No dumping anything without permission  
 2-Grass, leaves, garden plants, no brush, no branches  
 1-No garbage  
 1-Asphalt pile  
 1-Concrete pile  
 1-Dirt pile

1-Free wood chips  
1-Update pool fee board  
1-No parking this side of street  
2-Authorized vehicles only  
7-Object marker  
3-Port PD bike rodeo banners  
1-No Brush allowed  
6-City of Port Washington photo op  
2-Life ring locations for pier  
3-Sister City  
2-No firearms and weapons  
5-Recyclables  
1-Marina open house banner  
1-Road closed to thru traffic  
1-Your home port thanks you  
8- No bikes symbol  
8-No parking this side of street  
3-No parking Saturday starting 5:00 AM  
1-Park closed for fireworks  
2-No parking Monday-Friday 8 AM to 5 PM  
1-Walk Way Closed  
3-No parking this side of street  
2-Directional arrows  
2-25 MPH  
1-35 MPH  
4-4 way  
2-Stop ahead symbol  
2-Handicap  
1- Park & Rec Duathlon banner  
6-Bump  
27-No parking starting 5:00 AM  
5-Yield  
2-Slow  
2-School Pedestrian Crossing  
2-Down arrows  
1-To traffic from left  
1-Update United Way board

1-Christmas parade banner

1-Update Marina launch fees

2- Danger Icy conditions walkway closed for season

1-Municipal lot C-4

2-Overnight parking with permit

1-Jct 32, end 33