



2013 Street Department







The Municipal Service Center



**The Municipal Service Center was
reconstructed in 2006**







North Storage Bay

Maintenance Facility – 15 Ton Hoist



Maintenance Repair Bays



West Maintenance Repair Bay with 7-Ton Overhead Crane

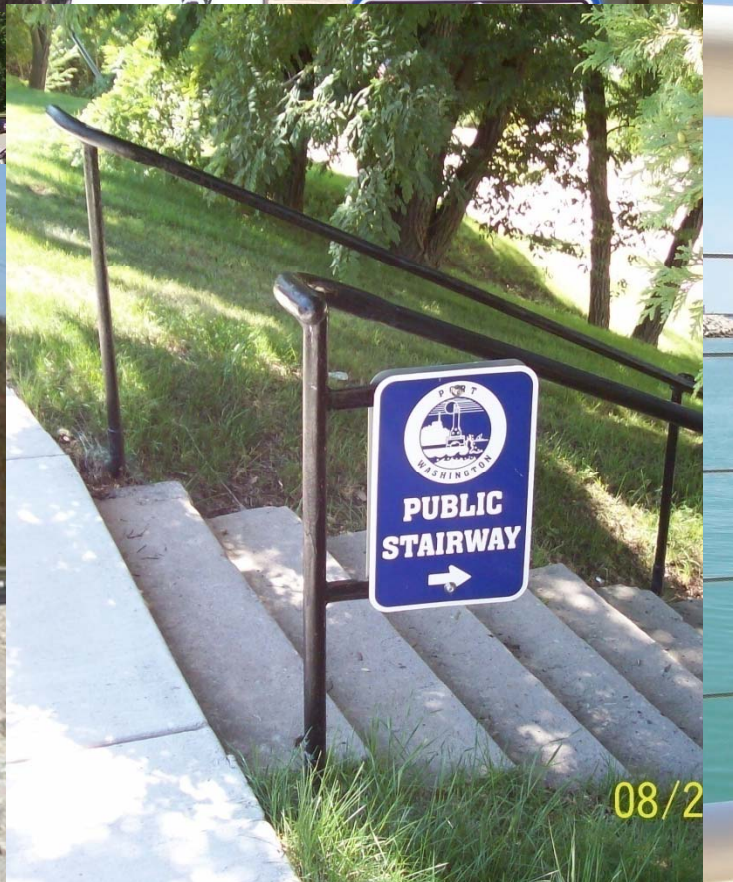




Street Dept. Sign Shop









**The Street Department
Fleet consists of:**

**20 - License Vehicles
23 - Construction
Equipment**







Street Department Employees - 10 Full-Time Employees

2 – Mechanics – Fabricators

1 – Certified Arborist

1 – Journeyman Plumber

1 - Mason

1 - Carpenter

4 – Equipment Operators



City Street Trees

7,146 – Total number of trees in urban forest

2,878 – Number of trees planted 2003 – 2012

550 – Trees being planted in 2013



**2013 Hwy. 33 –
Tree Planting
Project**





1,159 - Ash Trees
496 – Being Treated for EAB



Stump Grinding

Tree Trimming

600 to 1,000 trees trimmed annually



Brush Pick-Up and Chipping



**Weekly
curb side
pickup
provided
April 15th –
November
1st**

Fall Leaf Pickup



Snow Plowing

- ❖ **The Street Department plows 55 miles streets in the City of Port Washington**
- ❖ **5 miles of alleys**
- ❖ **City Sidewalks, Bike Paths, and City Parking Lots**

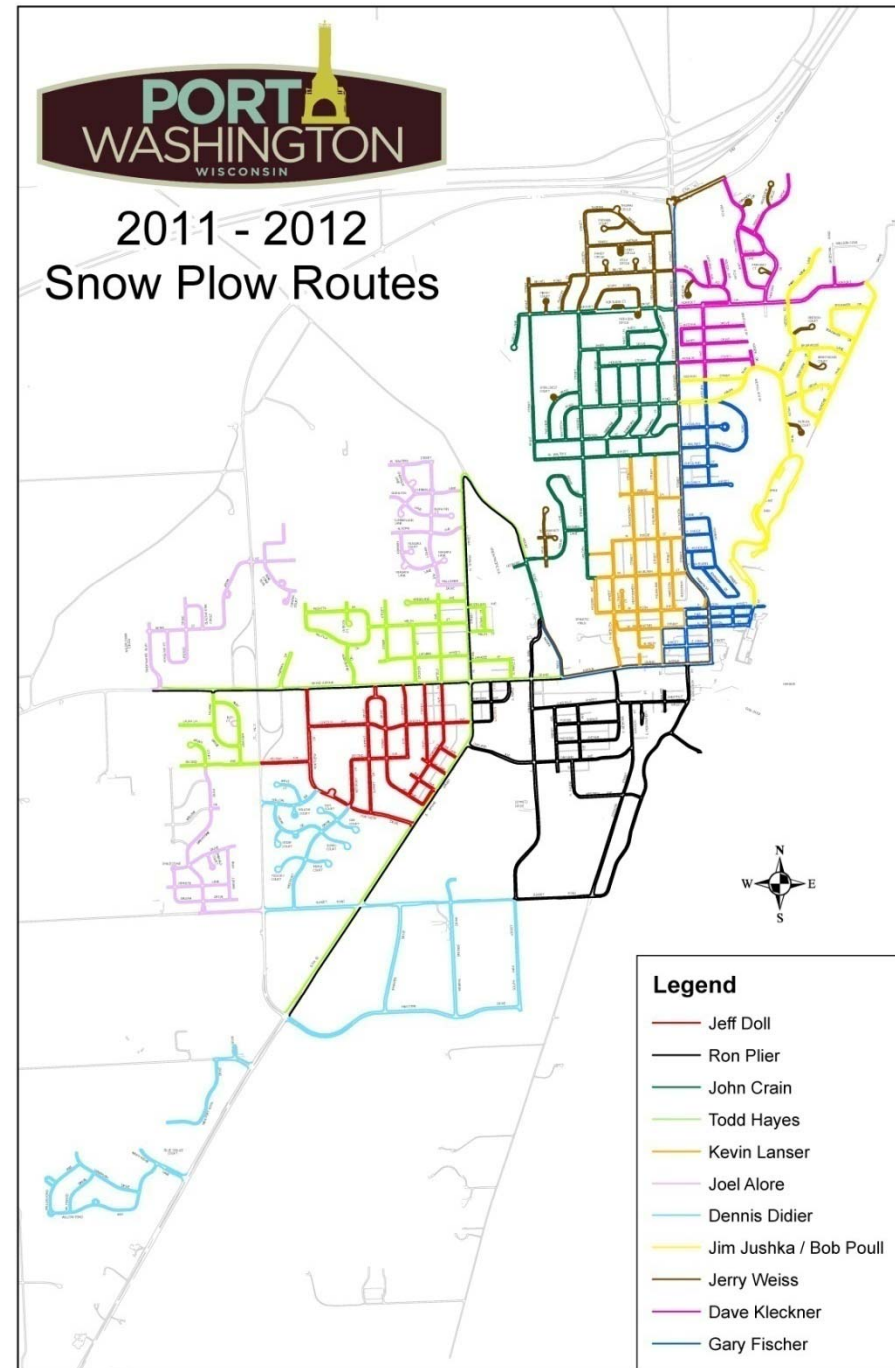


15 Dedicated Snow Plow Routes

❖ 10 Street Department Employees

❖ 4 Water Utility Employees

❖ 1 Park and Rec Employee



Annual Salt Use

2012 – 934 Tons (1,100 Tons Budgeted)

2011 – 923 Tons

2010 – 965 Tons

2009 – 1,125 Tons

2008 – 1,965 Tons

2007 – 2,169 Tons



Salt Storage & Purchase

- ❖ Purchased from Ozaukee County Highway Department.
- ❖ Stored in dome on South Spring Street.
- ❖ Scaled and charged by the ton.
- ❖ Invoiced on a monthly basis.



Sanitary Sewer Cleaning

**55 miles of
Sanitary Sewers**



**26 miles
cleaned in 2012**







Street Repairs

316 Tons of asphalt used in 2012



Cold Patching

28 Tons of Cold Patch used in 2012



Advanced Disposal picks up approximately 3,700 stops on a weekly basis for garbage and recycling.



Holidays and Celebrations

- ❖ Holiday Decorations
- ❖ Banners and Flags
- ❖ Fish Day
- ❖ Community Festival
- ❖ Maritime Heritage Festival





3 Signaled Intersections

- ❖ Converted from incandescent to LED

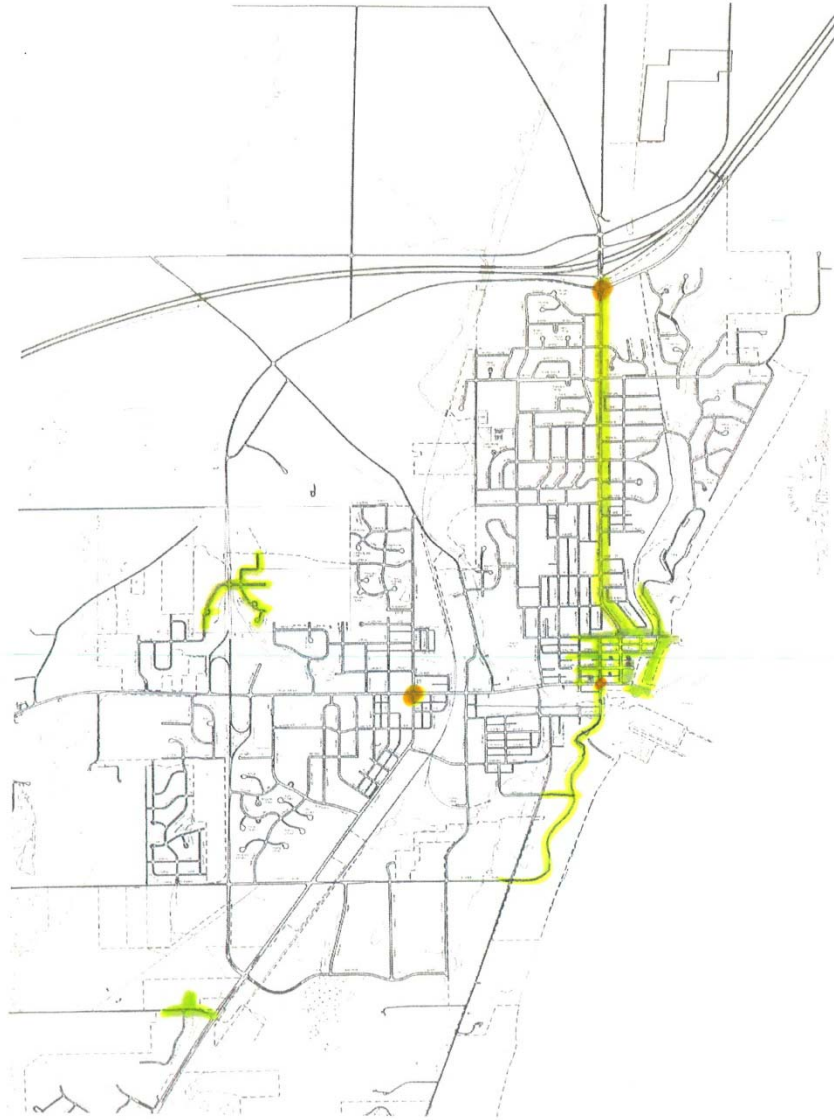




13 Whiteway Street Lights
14 Shoebox Street Lights
142 Decorative Street Lights

City of Port Washington
Street Map

June 6, 2006





Line Marking

On an annual basis:

- ❖ Center Lines
- ❖ Crosswalks
- ❖ Parking Stalls
- ❖ Parking Lots on an as needed basis
- ❖ Bike Path Markings







CITY YARD HOURS

TUESDAY 3:00 PM - 6:00 PM

THURSDAY 3:00 PM - 6:00 PM

SATURDAY 10:00 AM - 4:00 PM

**YARD OPENS THE FIRST WEEK OF APRIL
THRU THE FIRST SATURDAY OF DECEMBER**

CLOSED ON FISH DAY





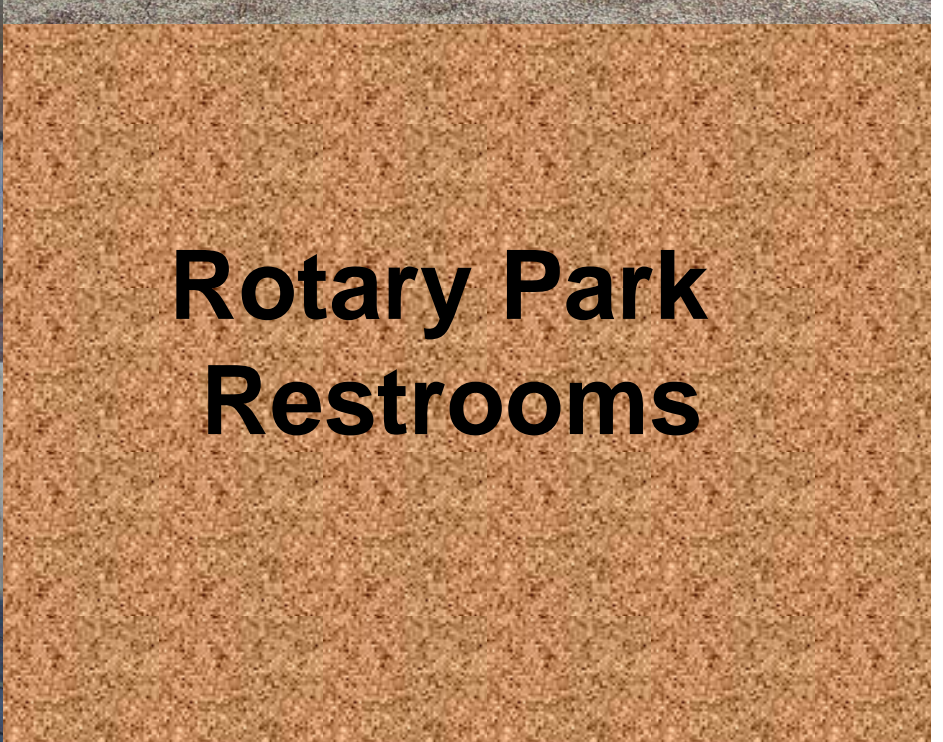


FLAMMABLE
KEEP FIRE AWAY

FILTERS
ONLY

CLOSE & COVER
DRAIN OIL

Street Department Projects



Rotary Park Restrooms

























